

V - Fixture

Fail-Safe

DESCRIPTION

The Fail-Safe HVSL provides style with strength. Steel end caps and steel body provides strength while an extruded linear ribbed polycarbonate lens obscures the LED image and spreads light evenly. The HVSL/B is a streamlined high abuse fixture with smooth edges and countersunk fasteners. The HVSL is ideal for areas where the need for aesthetics and protection from vandalism are critical.

Typical applications include stairwells, schools, hospitals, corridors, dormitories, public restrooms, common areas, and transit stations. HVSL8/B is a good choice for behavioral health facilities.

Catalog #	HVSL8-4-LD4-1STD-40-UNV-C-EDC1	Type
Project		
Comments		Date
Prepared by		

SPECIFICATION FEATURES

Housing

Heavy duty, 18 ga. steel housing and end caps provide rigid construction. Stainless-steel and die-formed aluminum available. End caps provided with 7/8" knockouts for continuous row mounting. Finished in matte white standard. Optional architectural colors available.

Fasteners

HVSL: Hex-head screws (4) secure the lens to the housing. Stainless steel TORX® with center reject pin and allen head set screws optional. HVSL/B: Hex-head screws (4) secure the lens to the housing. Stainless steel TORX® with center reject pin and Countersink TORX® tamper resistant screws secure the lens to the housing.

Lens

One-piece extruded UV stabilized opal polycarbonate standard. Optional clear ribbed polycarbonate. Unique linear ribbed design provides even light distribution while obscuring lamp image and direct glare. Internal ribs reduce dirt build-up and make cleaning easier. Nominal lens thickness = 0.135".

Lifetime lens warranty.

Reflector

20 ga. CRS with white high reflectance polyester powder coat finish. Reflector serves as driver and wireway cover.

Light-Emitting Diode (LED)

LEDs available in 3000K, 3500K, 4000K and 5000K with CRI > 85. Projected life is 50,000 hours at 70% lumen maintenance.

Transformer/Driver

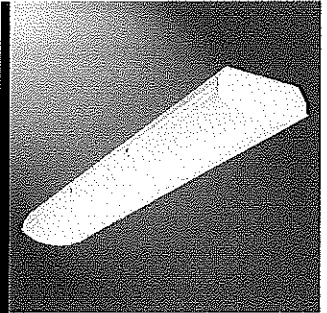
Electronic, 0-10V dimming standard.

Labels

UL listed for damp locations, wall or ceiling mount.

Warranty

Five year warranty on the LEDs and electrical. Lifetime Warranty if fixture found to be inoperative due to physical abuse for the duration of the installation.

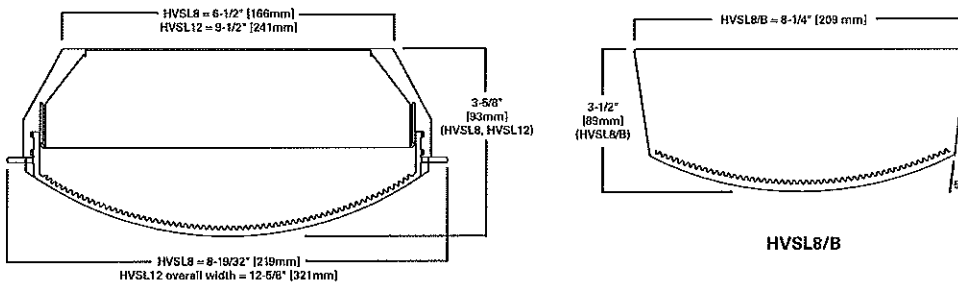


**HVSL8
HVSL12**

**HVSL8/B
LD4 LED**

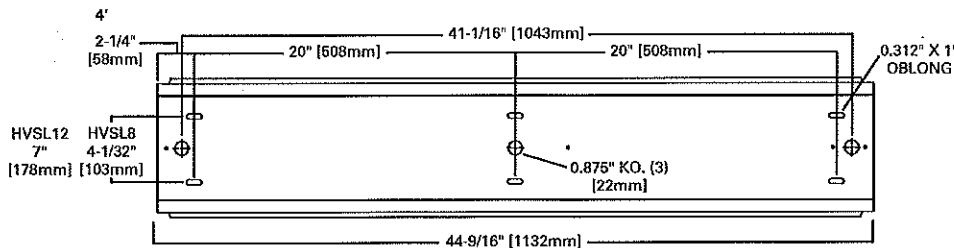
HVSL 8", 12" Width
HVSL8/B 8" Width
Vandal Resistant Linear LED
Steel Housing

Polycarbonate Lens
Lifetime Warranty



HVSL8 / HVSL12

MOUNTING DETAIL



(8' unit consists of (2) 4' units, attached at the factory)

ENERGY DATA

For Energy Management related technical data to support the performance of this fixture series, refer to the ordering information for input wattage.

U-Fixture

Fail-Safe

DESCRIPTION

The UCL and UCLV provide effective LED task lighting in most any demanding environment. Heavy gauge cold rolled steel, finished with powder coat white paint, encloses and protects the linear LED module. Stainless steel brushed or painted is available for extreme environments. The LED module is available in color temperatures from 3000K to 5000K. UCL and UCLV are available in acrylic or polycarbonate lenses. Available in 1' to 4' lengths, in 1' increments.

Catalog #		Type	
Project		Date	
Comments			
Prepared by			

SPECIFICATION FEATURES

Housing/Cover

UCL - 20 gauge cold-rolled steel housing. K.O. on back and each end. Keyhole slots for mounting.

UCLV - 20 gauge cold-rolled steel housing with keyhole slots for mounting. K.O. on back and ends for power. Seam-welded cover fits over housing (lens between housing cover). Four counter-sunk holes allow counter-sunk screws to attach cover to housing.

Finish

Gloss white polyester powder coat standard. Optional matte white anti-microbial powder coat white paint available. Stainless steel brushed or stainless steel painted powder coat white optional.

Fasteners

UCLV incorporates (4) stainless steel counter-sunk tamper proof TORX® T-20 screws which secure housing to back pan. Philips-head screws available.

Lens

Opal Acrylic and Opal Polycarbonate, 0.125" thick. Acrylic Pattern 12 and Polycarbonate Pattern 12, 0.125", 0.156" or 0.187" thick.

Electrical / LEDs

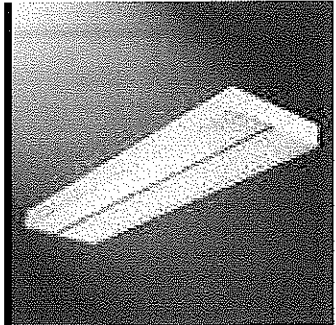
LED's are available in 3000K, 3500K, 4000K or 5000K with minimum 80 CRI. 90 CRI available. Nominal 750 lumens per linear foot. Replaceable LED / driver assembly. Life is 50,000 hours at 70% lumen maintenance. Electronic driver, 0-10V dimming standard.

Labels

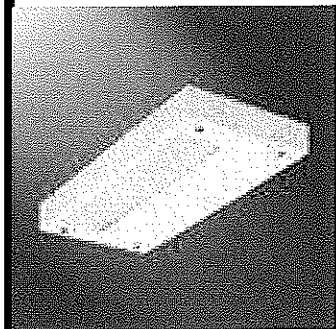
UL/cUL listed for damp locations. UCLV optional IP63 rated.

Warranty

Five year warranty on LED's and electrical.



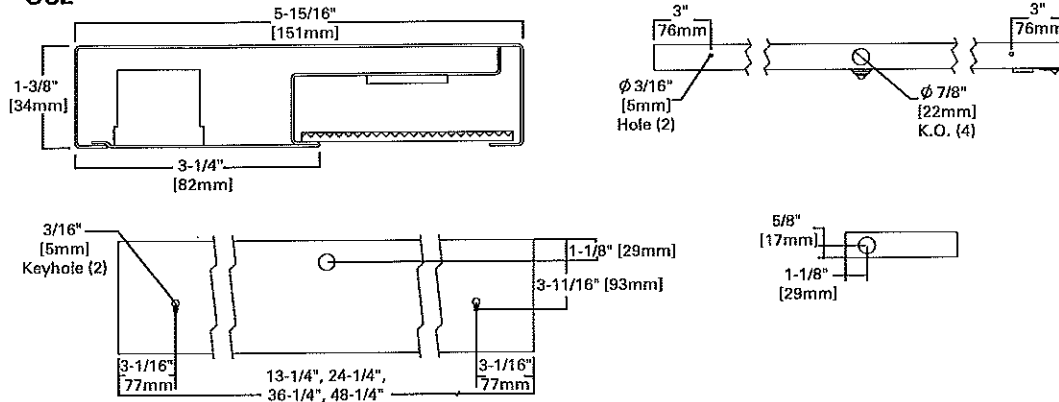
UCL



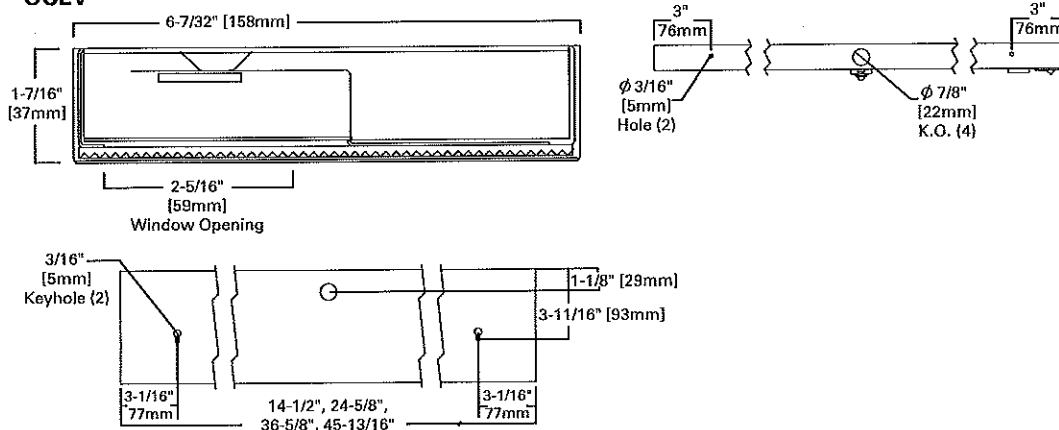
UCLV

DIMENSIONS

UCL



UCLV



UCL UCLV

LD4 LED
Undercabinet

Commercial
Medical
Vandal Resistant

Nominal Length	Nominal Input Watts
1' (300mm)	9.55
2' (600mm)	17.47
3' (900mm)	25.16
4' (1200mm)	49.15

Nominal Length	Nominal Delivered Lumens*
1' (300mm)	773.8
2' (600mm)	1622
3' (900mm)	2602
4' (1200mm)	4183

*A12125 Lens



KT-EMRG-LED-12-1200-K1

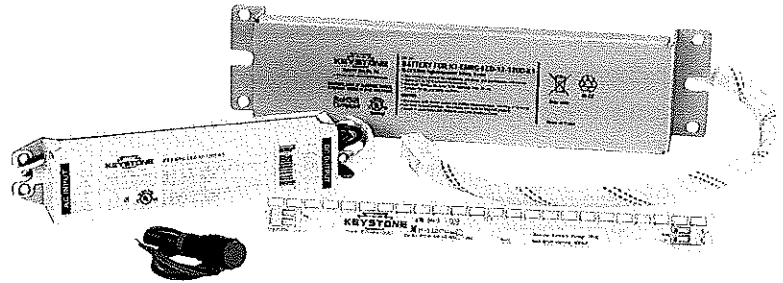
CONSTANT WATTAGE LED EMERGENCY BACK-UP



DESCRIPTION

LED Emergency Back-Up Driver Kit | 12W Output | 120-277V Input

DRIVER TYPE: Constant Wattage LED Emergency
MAX. OUTPUT POWER: 12W
INPUT VOLTAGE: 120-277Vac ±10%
OUTPUT VOLTAGE: 12~41 Vdc
OUTPUT CURRENT: 1000mA-200mA
WARRANTY: 5 Years



PRODUCT FEATURES

- Drives Dedicated LED Load (Included) at 12W for a Minimum of 90 Minutes
- Meets FCC Part 15 (Class B) Consumer Limits
- Short Circuit Overload and Open Load Protection
- Type 1 Outdoor, Suitable for Dry and Damp Locations
- Evaluated to UL 924 Standards
- Operating Temperature: 32°F/0°C to 122°F/50°C
- Input Frequency: 50/60 Hz
- Test Switch/Charging Indicator Light
- Battery Pack with Quick Connect; NiCd
- Battery Capacity: 3000mAh

SPECIFICATIONS

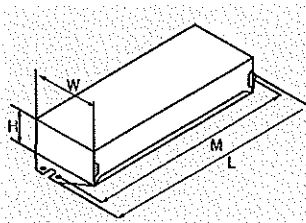
ELECTRICAL SPECIFICATIONS

Family	INPUT CHARACTERISTICS			OUTPUT CHARACTERISTICS		
	Input Voltage	Power Factor	Max. Current	Max. Output Power	Rated Output Current	Output Voltage
12W	120-277Vac	≥0.5	0.07A @ 120V	12W	1000mA-200mA	12~41Vdc

Emergency pack designed to deliver 12W to a constant current LED load. Approximate output is 1200 lumens assuming a nominal minimum efficacy of 100lm/W.

MECHANICAL SPECIFICATIONS

CASE DIMENSIONS



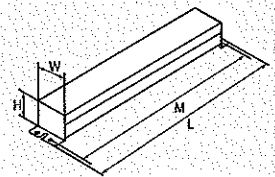
LENGTH	6.46"
WIDTH	1.37"
HEIGHT	1.00"
MOUNTING	6.00"
CASE STYLE	L7
CASE MATERIAL	METAL

STANDARD LEAD LENGTHS*

WHITE	12"
BLACK	12"
WHITE/BLACK	12"
RED	24"
BLUE	24"
BROWN	24"

*Consult Keystone for special lead length requirements.
 Lead wires are 18 AWG 105°C/600V.

BATTERY SIZE



LENGTH	9.45"
WIDTH	2.23"
HEIGHT	1.02"
MOUNTING	8.91"

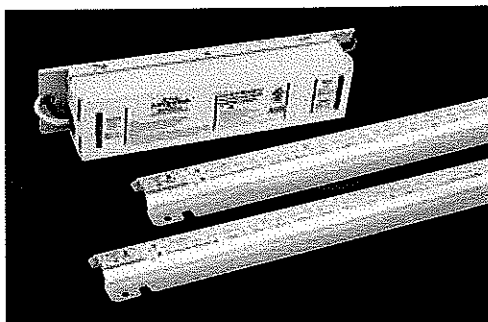
MODULE SPECIFICATIONS

CATALOG NUMBER	KTLM-600-L8-850-24A-CP		
LENGTH	8.00"	No. of LEDs	24
WIDTH	0.70"	Color Temperature	5000K

Fixture K Retro

LINEAR LED KITS WITH ALUMAGROOVE

2' AND 4' KITS



NEW!

High efficacy linear LED modules pre-mounted into aluminum extrusion via a patented manufacturing method. Each kit includes (1) LED driver, (2) LED modules, mounting hardware, optional diffused lens, and accessories.

PRODUCT FEATURES

- UL Classified 1598C
- Dimmable with 0-10V dimmers
- High lumen density design; approximately 1,500 lumens/foot
- Completely heat sunked, no additional heat sinking needed to extend lifetime
- Low profile, push-in connectors
- Made with UL Recognized Components
- L70 calculated lifetime > 50,000 hours at 105°C/221°F LED temperature
- Optional diffused lenses are available for all lengths and are included with the kits listed below

RoHS Compliant **5 YEAR WARRANTY**

4' LINEAR KITS, 80 CRI

KIT SPECIFICATIONS:

Dimming Type: 0-10V

Driver: (1) KTLD-30-UV-900-VDIM-LA1

Module: (2) KTAG-44L-1400-30-8xx-RJ

Color Temp	Input Voltage	CRI	AlumaGroove Kit Catalog Number	No. of Modules	Total System Drive Current	Drive Current per Module	Total System Lumens	Total Module Power	Module Efficacy	Driver Efficiency	Total System Power	Total System Efficacy
3500K	120-277V	>80	KT-RKIT-2AG44-4000-835-VDIM	2	900mA	450mA	4109	25W	166 lm/W	84%	29W	139 lm/W
4000K	120-277V	>80	KT-RKIT-2AG44-4000-840-VDIM	2	900mA	450mA	4158	25W	168 lm/W	84%	29W	141 lm/W
5000K	120-277V	>80	KT-RKIT-2AG44-4000-850-VDIM	2	900mA	450mA	4232	25W	171 lm/W	84%	29W	144 lm/W

KIT SPECIFICATIONS:

Dimming Type: 0-10V

Driver: (1) KTLD-36-UV-1100-VDIM-LA3

Module: (2) KTAG-44L-1400-30-8xx-RJ

Color Temp	Input Voltage	CRI	AlumaGroove Kit Catalog Number	No. of Modules	Total System Drive Current	Drive Current per Module	Total System Lumens	Total Module Power	Module Efficacy	Driver Efficiency	Total System Power	Total System Efficacy
3500K	120-277V	>80	KT-RKIT-2AG44-5000-835-VDIM	2	1100mA	550mA	5015	31W	164 lm/W	84%	36W	138 lm/W
4000K	120-277V	>80	KT-RKIT-2AG44-5000-840-VDIM	2	1100mA	550mA	5067	31W	166 lm/W	84%	36W	139 lm/W
5000K	120-277V	>80	KT-RKIT-2AG44-5000-850-VDIM	2	1100mA	550mA	5171	31W	169 lm/W	84%	36W	142 lm/W

KIT SPECIFICATIONS:

Dimming Type: 0-10V

Driver: (1) KTLD-40-UV-1350-VDIM-LA3

Module: (2) KTAG-44L-1400-30-8xx-RJ

Color Temp	Input Voltage	CRI	AlumaGroove Kit Catalog Number	No. of Modules	Total System Drive Current	Drive Current per Module	Total System Lumens	Total Module Power	Module Efficacy	Driver Efficiency	Total System Power	Total System Efficacy
3500K	120-277V	>80	KT-RKIT-2AG44-6000-835-VDIM	2	1350mA	675mA	6032	38W	159 lm/W	84%	45W	134 lm/W
4000K	120-277V	>80	KT-RKIT-2AG44-6000-840-VDIM	2	1350mA	675mA	6108	38W	161 lm/W	84%	45W	135 lm/W
5000K	120-277V	>80	KT-RKIT-2AG44-6000-850-VDIM	2	1350mA	675mA	6221	38W	164 lm/W	84%	45W	138 lm/W

Fixture HB

Metalux

DESCRIPTION

The VHB is designed for a wide variety of applications and mounting heights with a balance of fixture performance and affordability. Precision designed optics, multiple distributions, lumen outputs and color temperatures make the VHB ideal for industrial, commercial, manufacturing, gymnasium and other applications that utilize traditional linear fluorescent and HID high bays. The proprietary discrete, low-brightness LED module assembly offers exceptional optical performance with the enhanced benefits of LED lighting, including energy savings, extended system life, a reduced carbon footprint.

Catalog #		Type
Project		
Comments		Date
Prepared by		

SPECIFICATION FEATURES

Construction

Durable CRS and extruded aluminum housing provides added protection for LED components and optimal performance. Compact 15in x 18in low-profile design for a less obtrusive installation.

Electrical

Long-life LED system coupled with electrical driver to deliver optimal performance. LED's available in 3500K, 4000K and 5000K with a CRI ≥ 80. cULus listed. Electronic drivers are available for 120-277V, 347V and 480V applications. Standard 0-10V dimming. Or, specify the Digital Addressable Lighting Interface (DALI) drivers for use with Fifth Light controls.

Finish

White enamel finish preceded by a multistage cleaning cycle, iron phosphate coating with rust inhibitor to protect against contaminants and oxidation.

Optics

Precision designed, high-impact polycarbonate optics deliver even illumination. Narrow and wide distribution ensures superior performance to key areas within an application.

Options

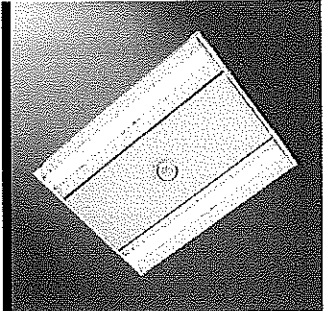
Integral Occupancy Sensor available and provides 1200 sq. ft. of coverage in a maximum mounting height of 30'.

Mounting

The VHB LED series is ideally suited for suspension mounting with standard V Hangers (included) and optional chain set, or cable mounting. Single-point mounting is also available with SPM adapter kit.

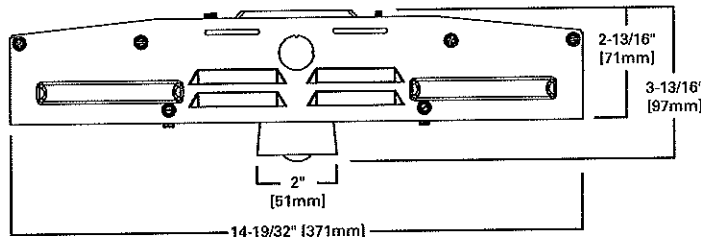
Compliance

Luminaires are cULus listed for damp locations -40°C to 40°C ambient environments with 0-10V drivers (see chart). RoHS compliant, and LED modules comply with IESNA LM-79 and LM-80 standards. DesignLights Consortium® Qualified and classified for DLC Standard, refer to www.designlights.org for details.

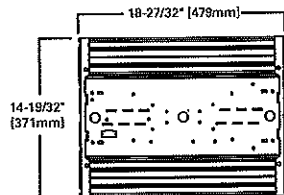


**VHB
LED**

LED High Bay Luminaire



DIMENSION TOP VIEW



ENERGY DATA

Input Watts:
 VHB-LD1-9 (9,000 lumens)=70W
 VHB-LD1-12 (12,000 lumens)=100W
 VHB-LD1-15 (15,000 lumens)=124W
 VHB-LD1-18 (18,000 lumens)=160W
 VHB-LD1-24 (24,000 lumens)=213W

LINEAR DISCONNECT

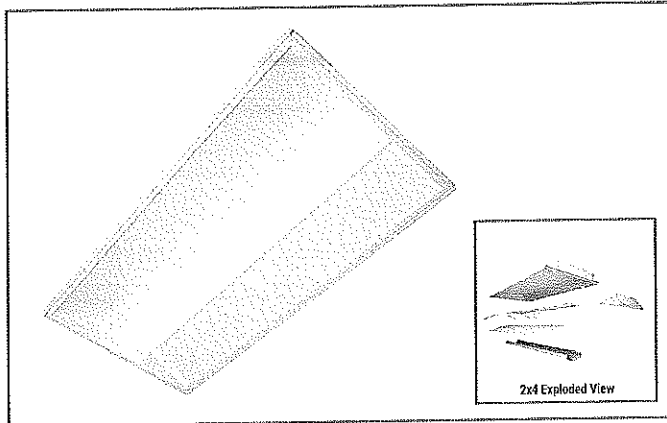
Safe and convenient means of disconnecting power



PS519174EN
1-2-2018

Fixture TR & TRE

Project		Catalog #		Type	
Prepared by		Notes		Date	



Metalux

CZRK Cruze LED Retrofit Kit

2' x 4' Specification Grade LED Retrofit Kit

Typical Applications

Commercial Office • Schools • Hospitals • Retail

Interactive Menu

- Order Information [page 2](#)
- Photometric Data [page 3](#)
- Control Solutions [page 3](#)
- Connected Systems [page 3](#)
- Product Warranty

Product Certification



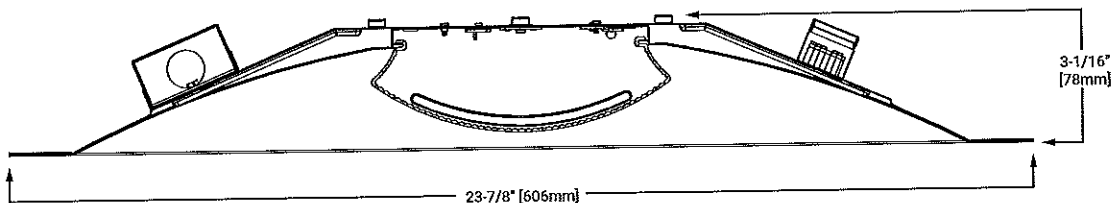
Product Features



Top Product Features

- 1' x 4', 2' x 2', and 2' x 4' sizes available
- Simple and tool-less installation (less than 5 minutes) - labor savings
- Uses the fluorescent luminaire's housing - lower disposal costs
- Energy savings greater than 50% vs. fluorescent luminaire

Dimensional and Mounting Details



Fixture W

Metalux

DESCRIPTION

WSNLED is a premium featured, traditionally styled LED wraparound series which can be used in a broad range of commercial, institutional, retail and industrial applications. This newly designed platform is a high quality luminaire utilizing Eaton's latest solid state lighting and electronic driver technologies offering superior aesthetics, optimal optical performance and energy efficiency. Premium optical materials provide even, clean illumination eliminating lamp image commonly associated with traditional fluorescent solutions.

Whether surface or suspended, the WSNLED series is an ideal choice for specifications where a premium aesthetic is required.

SPECIFICATION FEATURES

Construction

Housing consists of die formed cold rolled steel. Ends formed with the housing for strength and provisions for continuous row aligners. Steel end plates with 7/8" KO and light-seal embossment. Driver cover can be removed without tools.

Controls

WSNLED is Powered by Fifth Light, with standard a 0-10V continuous dimming driver that works with any 0-10V control/ dimmer. Combine with energy saving products like occupancy sensors, daylighting controls and lighting relay panels to maximize energy savings. Dimming range is 10% to 100%; varies by control device. Other driver options include step-dim or, go fully digital with the Digital Addressable Lighting Interface (DALI) drivers.

Electrical

Long-Life LED system coupled with electrical driver to deliver optimal performance. LED's available in 3000K, 3500K, 4000K and 5000K

with a min. 80 CRI. Projected life at 70% lumen maintenance is nearly 150,000 hours with TM21 rating up to L87 > 60,000 hours. Electronic drivers are available for 120-277V applications. A 0-10V dimming driver is standard.

Emergency Battery Pack Option

Optional 120V-277V integral emergency battery pack is available in 7-watts or 14-watts to meet critical life-safety lighting requirements. The 90-minute batteries provide constant power to the LED system, ensuring code compliance. The patented EZ Key prevents accidental discharge of the battery during construction.

Finish

Die formed heavy gauge steel. Tight fit for ease of maintenance.

Channel/Wireway Cover

Die formed heavy gauge steel. Tight fit for ease of maintenance.

Shielding

Acrylic end caps with a frost finish to improve aesthetics and

illumination. Clear acrylic lens coupled with LED optical materials providing superior brightness control while improving overall light distribution and aesthetics. This distribution is further enhanced through the use of embedded prisms within the lens on both side and bottom.

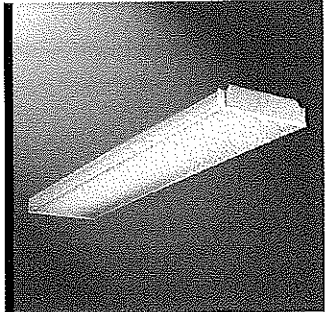
Installation

Fixture may be surface, pendant, or stem mounted. See accessories below for ordering information.

Compliance

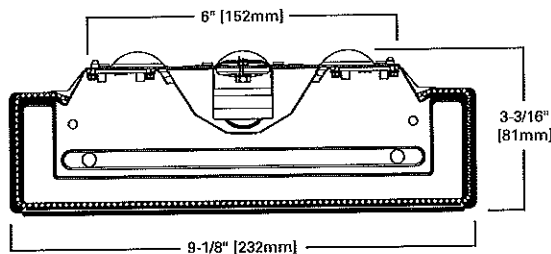
Indoor luminaires are cULus listed for 25°C ambient environments, damp location listed, RoHS compliant, and LED modules comply with IESNA LM-79 and LM-80 standards. DesignLights Consortium® Qualified and classified for DLC Standard, refer to www.designlights.org for details. Suitable for use in clothes closets when installed in accordance with the NEC 410.16 spacing requirements. Can be used for State of California Title 24 high efficacy luminaire.

Catalog #		Type
Project		
Comments		Date
Prepared by		

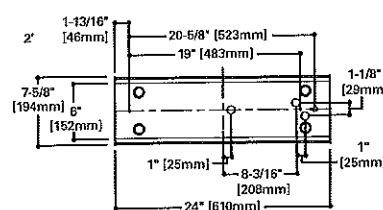
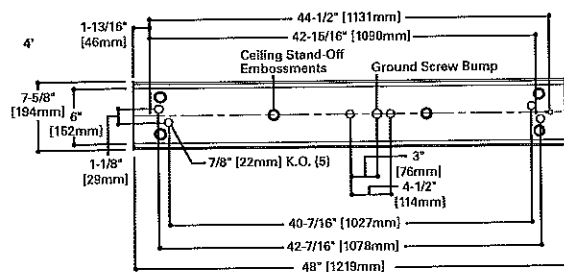


WSNLED LED

Premium LED Wraparound



MOUNTING DATA



Fixture CC



KT-LED27HID-EX39-840-D /G2

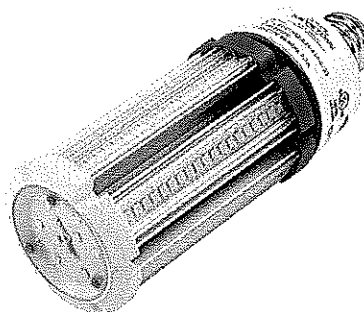
HID REPLACEMENT LED LAMP

DESCRIPTION

27W HID Replacement LED Lamp | 4000K | >80 CRI | IP64 Rated



LAMP TYPE: HID Replacement LED
BASE TYPE: EX39 (Mogul)
WATTAGE: 27W
COLOR TEMPERATURE: 4000K
METAL HALIDE EQUIVALENT: 100W
COLOR RENDERING INDEX (CRI): >80
WARRANTY: 5 Years



PRODUCT FEATURES

- Replacement for Conventional Metal Halide Lamp
- Non-Dimmable; Do Not Dim
- 50,000+ Hour Lifetime
- Environmentally Friendly: No Mercury Used
- Instant Startup
- UL Listed
- DLC Listed
- Operating Temperature: -29°C/-20°F to 60°C/140°F
- Integral Driver, Eliminates the Need for External Driver or Ballast; Includes 4kV Surge Protection
- IP64 Rated; Integrated Heat Sink Quickly Dissipates Heat and Guides Water Intrusion Out of the Lamp
- Suitable for Use in Fully Enclosed Fixture

OPERATING SPECIFICATIONS

ELECTRICAL CHARACTERISTICS

Input Voltage	Power Consumption	Power Factor	Input Current
120-277Vac	27W	>0.9	0.23A @ 120V 0.10A @ 277V

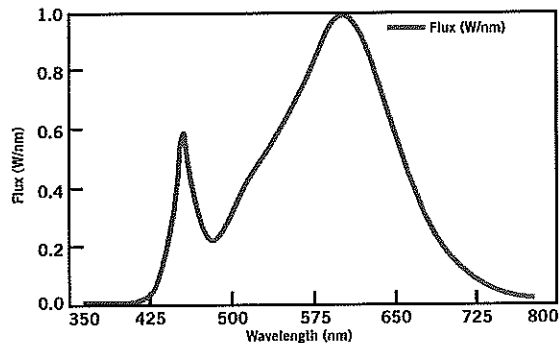
PHOTOMETRIC CHARACTERISTICS

Color Temperature (CCT)	4000K
Luminous Flux	3780 lm
Color Rendering Index (CRI)	>80
Efficacy	140 lm/W
Visible Light Area	360°

RATED LIFE

L70 (Hours)	50,000
-------------	--------

SPECTRAL DISTRIBUTION



LUX DISTANCE CURVE

