



Submittal Data Information

"BTL" Flanged Vertical Storage Tanks with Low Connections

401-189

SUPERSEDES: May 25, 2016

EFFECTIVE: June 1, 2016

Job: Wawona Middle School Chiller Replacement

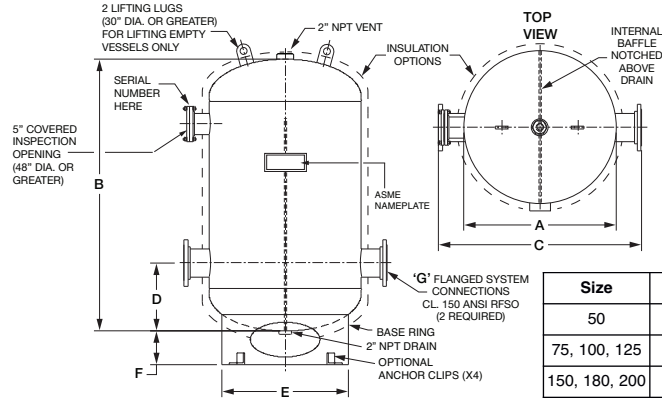
ITEM	LOCATION	MODEL	QUANTITY	GALLONS
BT-1	Wawona Middle	BTL0500F06-125N	1	500

SPECIFICATIONS

- Designed and constructed per ASME Code Section VIII, Division 1.
- Construction: Carbon Steel with exterior red oxide primer finish
- Maximum Design Pressure and Temperature: 125 psi @ 375°F
- Flanged inlet and outlet System Connections (standard sizes shown)
- Registered with the National Board of Pressure Vessel Manufacturers

OPTIONS (Consult Factory)

- Optional materials of construction
- Higher design pressures and temperatures
- Optional System Connection sizes available
- Thermal insulation
 - None
 - Chilled Water 1/2" Armaflex
 - Heating Water 1" Silicon Blanket
- Optional Connection Types
 - 'T' Female NPT Threaded 2" & 2 1/2" only
Available only on sizes, BTL0050 thru BTL0350
- 150 PSI Working Pressure
- Anchor Clips (4)



Size	Dia.	"C" Dim.	
		2" T	2-1/2" T
50	20	23 3/8	23 5/8
75, 100, 125	24	27 3/8	27 5/8
150, 180, 200	30	33 3/8	33 5/8
250, 300, 350	36	39 3/8	39 5/8

***Complete Model Number as shown below:**
BTL0050F02-125N

SIZES & DIMENSIONS

All dimensions shown are subject to change and should not be used for pre-piping. Contact your local Taco representative should certified dimensional drawings be required.



Nozzle Size offered circled below.
Example: (3)

MODEL* NUMBER	TANK VOLUME	A DIAMETER	B	C**	D	E DIAMETER	F	G	APPROX. WEIGHT
	GAL.	INCH	INCH	INCH	INCH	INCH	INCH	SIZE	
BTL0050F__-125N	50	20	43	30	11 1/2	16	6 3/4	2, 3, 4	190
BTL0075F__-125N	75	24	46	34	12 5/8	20	6 3/4	2, 3, 4	240
BTL0100F__-125N	100	24	61	34	12 5/8	20	6 3/4	2, 3, 4	280
BTL0125F__-125N	125	24	76	34	12 5/8	20	6 3/4	2, 3, 4	330
BTL0150F__-125N	150	30	60	40	14 1/4	24	8	2, 3, 4	510
BTL0180F__-125N	180	30	71	40	14 1/4	24	8	2, 3, 4	590
BTL0200F__-125N	200	30	78	40	14 1/4	24	8	2, 3, 4	630
BTL0250F__-125N	250	36	69	46	16 1/4	30	7 7/8	3, 4, 6	710
BTL0300F__-125N	300	36	82	46	16 1/4	30	7 7/8	3, 4, 6	820
BTL0350F__-125N	350	36	94	46	16 1/4	30	7 7/8	3, 4, 6	910
BTL0400F__-125N	400	48	65	58	18 7/8	40	8 5/8	4, 6, 8	1,010
BTL0450F__-125N	450	48	72	58	18 7/8	40	8 5/8	4, 6, 8	1,080
BTL0500F__-125N	500	48	79	58	18 7/8	40	8 5/8	4, 6 , 8	1,160
BTL0700F__-125N	700	48	100	58	18 7/8	40	8 5/8	4, 6, 8	1,300
BTL0850F__-125N	850	54	99	64	22 5/8	44	9 3/8	4, 6, 8	1,880
BTL1050F__-125N	1050	60	99	70	24 3/4	50	9 3/4	6, 8, 10	2,130
BTL1250F__-125N	1,250	60	115 7/8	70	25 1/16	50	10	6, 8, 10, 12	2,235
BTL1500F__-125N	1,500	60	137 7/8	70	25 1/16	50	10	6, 8, 10, 12	2,740
BTL1750F__-125N	1,750	72	113 1/4	82	28 3/8	64	14 1/16	6, 8, 10, 12	3,340
BTL2000F__-125N	2,000	72	128 1/4	82	28 3/8	64	14 1/16	6, 8, 10, 12	3,640
BTL2500F__-125N	2,500	84	123 1/2	94	32	72	14 1/8	6, 8, 10, 12	5,340
BTL3000F__-125N	3,000	84	145 1/2	94	32	72	14 1/8	6, 8, 10, 12	6,140

**Add 2" to "C" dimension when specifying 10" or 12" nozzles



Taco, Inc., 1160 Cranston Street, Cranston, RI 02920 | Tel: (401) 942-8000 | FAX: (401) 942-2360
 Taco (Canada), Ltd., 8450 Lawson Road, Suite #3, Milton, Ontario L9T 0J8 | Tel: (905) 564-9422 | FAX: (905) 564-9436
 Visit our web site: www.TacoComfort.com | Printed in USA | ©2015 Taco, Inc.

